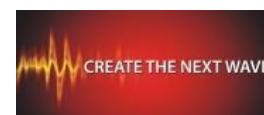


PF Transfer from Satyam / Mahindra Satyam to new Employer – FAQ's



FAQ's on PF Transfer from Mahindra Satyam to new employer

1. What is the process for transferring my PF from Satyam / Mahindra Satyam a to my current employer's PF account?

- Please fill up PF transfer form ' FORM 13' with your new employer's HR/Finance team
- Your current employer submits your Form No.13 to their RPFC office /trust. The respective RPFC / trust sends memo to RPFC Pune calling for EPF accumulations.
- RPFC Barkatpura validates the form & transfers the funds to your current employer's RPFC account / Trust
- Please ensure that your current employer sends the form to RPFC & NOT to TechMahindra.
- In case you want to know the status of your PF-Transfer Out application status , please contact the PF authorities directly or raise a grievance on the EPFO grievance cell at <http://epfigms.gov.in/> • TechMahindra does not have any visibility on transfer status as PF transfer is a transaction between 2 PF offices. TechMahindra PF team has no role to play in this process.

*****Please note that there is no time limit for transfer of PF. It depends only on clearance of PF amount from the concerned RPFC offices.***

2. Who maintains the PF accounts for Satyam / Mahindra Satyam. Does Satyam / Mahindra Satyam have a PF Trust.

- Satyam / Mahindra Satyam PF account are maintained and administered by RPFC Barkatpura(Hyderabad) (Central Government Office) . We have not setup any PF Trust.

The contact details for RPFC Barkatpura (Hyderabad), are as mentioned below :

**Regional Provident Fund Commissioner,
Office of Employees Provident Fund,
Bhavishyanidhi Bhawan, No. 3-4-763,
Barkatpura Chaman, Hyderabad-
500027(Telangana).**

3. *How can I find my satyam / Mahindra Satyam PF account number?*

- Your PF account number is printed on all your Satyam / Mahindra Satyam salary slips.

3. *Does satyam / Mahindra Satyam have any different Pension Account Number?*

- No there is no separate number for Pension account. Both PF & Pension accounts are linked to one single account number which is printed on all your satyam / Mahindra Satyam salary slips

4. *What is satyam / Mahindra Satyam PF account balance as on today?*

- To know your PF amount kindly log on to the EPFO website as mentioned below.
- http://www.epfindia.com/site_en/KYEPFB.php
- Kindly select Telangana and input the data in the format mentioned below
{AP HYD 23034 000 PF account Number}.

*****Please note that the PF balance is updated on the portal by RPFC & TechMahindra does not have any visibility on your PF balance as the account is maintained by RPFC.***